

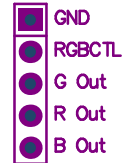
VBXE 2.1 connectors pinouts, please refer to VBXE installation guide for their end-points

RGB output for RGB monitor / SCART equipped TV
The RGBCTL should be
connected to the pin #16
of the SCART connector

CSync signal should be
taken from the pin #15
of the CD4050 chip
this chip is located near GTIA
on the motherboard

Please refer to the motherboard pictures
of Your Atari

J4



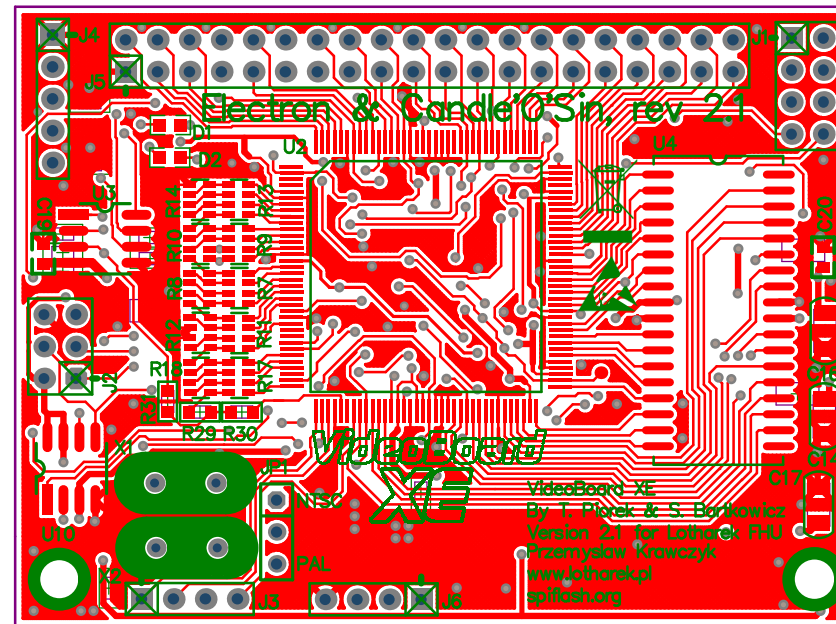
J2



Standard AVR 6-pin programming header
Service Use ONLY!



RDY/CSYNC (VGA)
Use of RDY signal as CSYNC for VGA monitor was deprecated
and is valid only if using VGA cores (FX 1.24)



J3 Connect these signals
to the appropriate points
on Your motherboard



J6 For XE series only GND and 14MHz
should be connected

For XL series GND and 3.5MHz
7MHz is provided for the future use
(ie Bob Wooley's turbo board)

J1



Please see the schematics
section for further explanation
of this connector

Electron & Candle'O'Sin, rev 2.1

VideoBoard
XE

VideoBoard XE
By T. Piorek & S. Bartkowicz
Version 2.1 for Lotharek FHU
Przemysław Krawczyk
www.lotharek.pl
spiflash.org

